

Name: _____

Student #: _____

Date: _____

T.A. #: _____

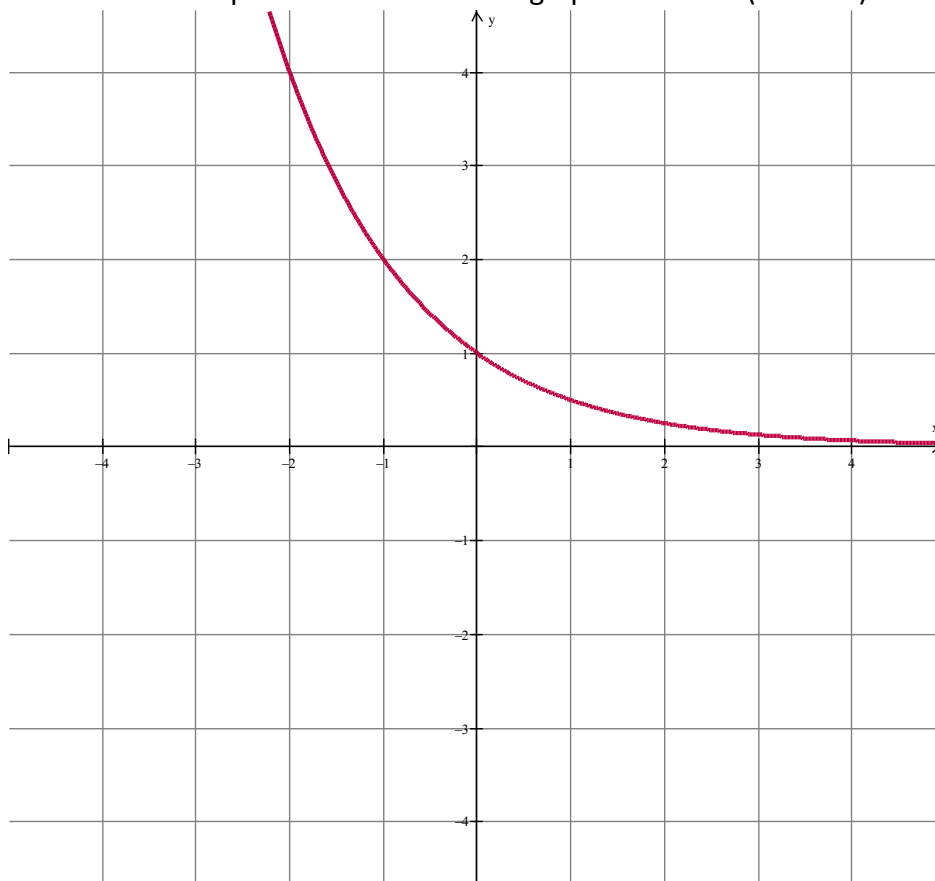
Mathematics 12 Pre-Calculus
LEARNING GUIDE 13 TEST
EXPONENTIAL FUNCTIONS & EQUATIONS

/18

***Full marks will NOT be given for the final answer only.**

When using a calculator, you should provide a decimal answer that is correct **to at least two decimal places** (unless otherwise indicated). Such rounding should occur **only** in the final step of the solution.

1. Determine the equation of the function graphed below. (2 marks)



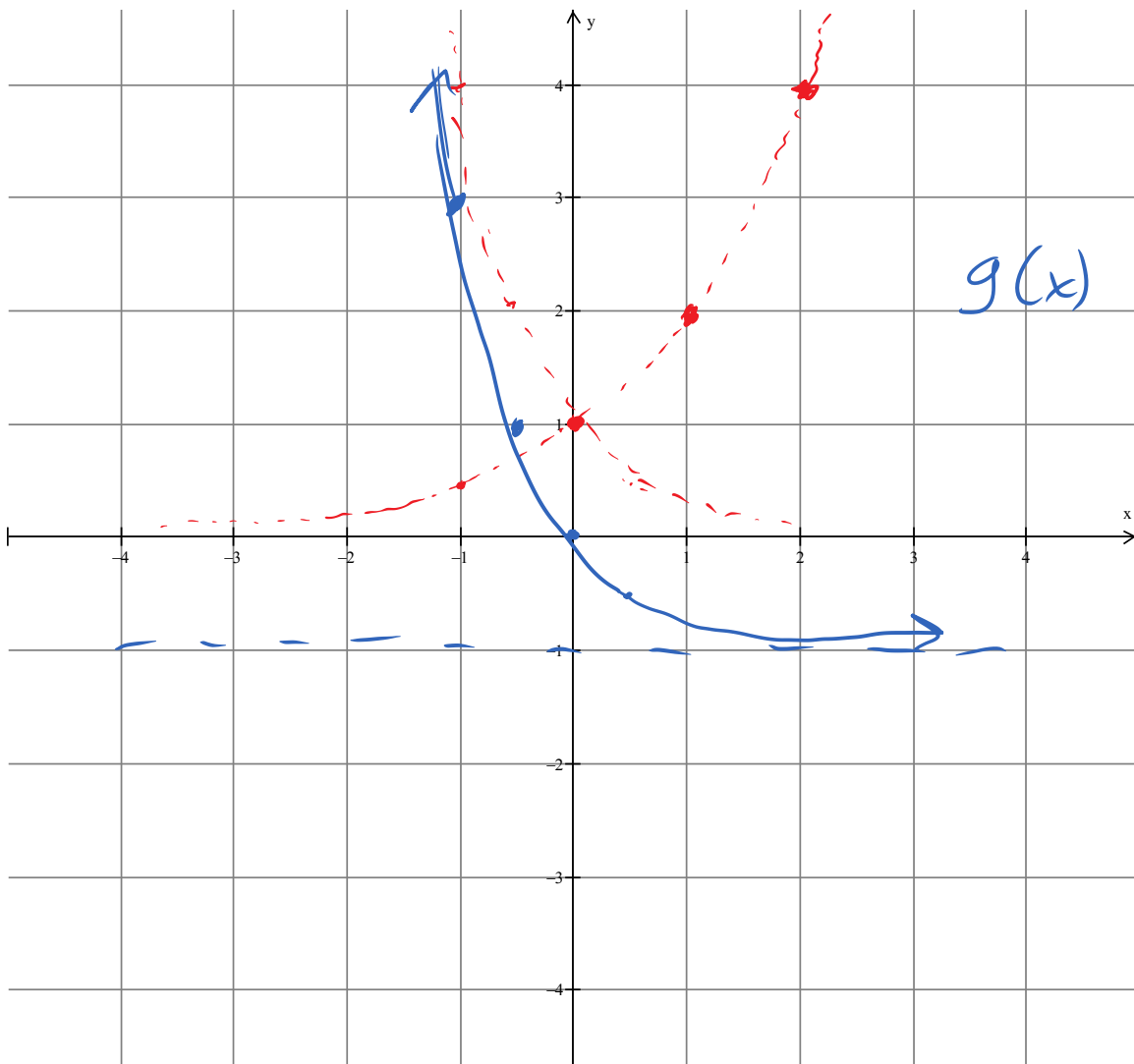
$$y = \frac{1}{2}^x$$

/2

2. What transformations were applied to the function $f(x) = 2^x$ to generate the function $g(x) = 2^{-(2x)} - 1$? (3 marks)

REFLECT in y axis
 H.C. BAFO $\frac{1}{2}$
 Down 1

3. Sketch the graph of the function $g(x) = 2^{-(2x)} - 1$. (2 marks)



4. What is the domain and range of the function $y = -a^{(x-b)} + c$ where a, b, c are positive real numbers. (2 marks)

$$D: x \in \mathbb{R}$$

$$R: y < c$$

5. Solve each exponential equation (3 marks each).

a) $9^{x-3} = 3^{1-x}$

$$3^{2(x-3)} = 3^{1-x}$$

$$2(x-3) = 1-x$$

$$2x-6 = 1-x$$

$$3x = 7$$

$$x = \frac{7}{3}$$

b) $8^{2x} = 16^{x+2}$

$$2^{3(2x)} = 2^{4(x+2)}$$

$$6x = 4x + 8$$

$$2x = 8$$

$$x = 4$$