

Name: _____

Student #: _____

Date: _____

T.A. #: _____

Mathematics 12 Pre-Calculus
LEARNING GUIDE 13 TEST
EXPONENTIAL FUNCTIONS & EQUATIONS

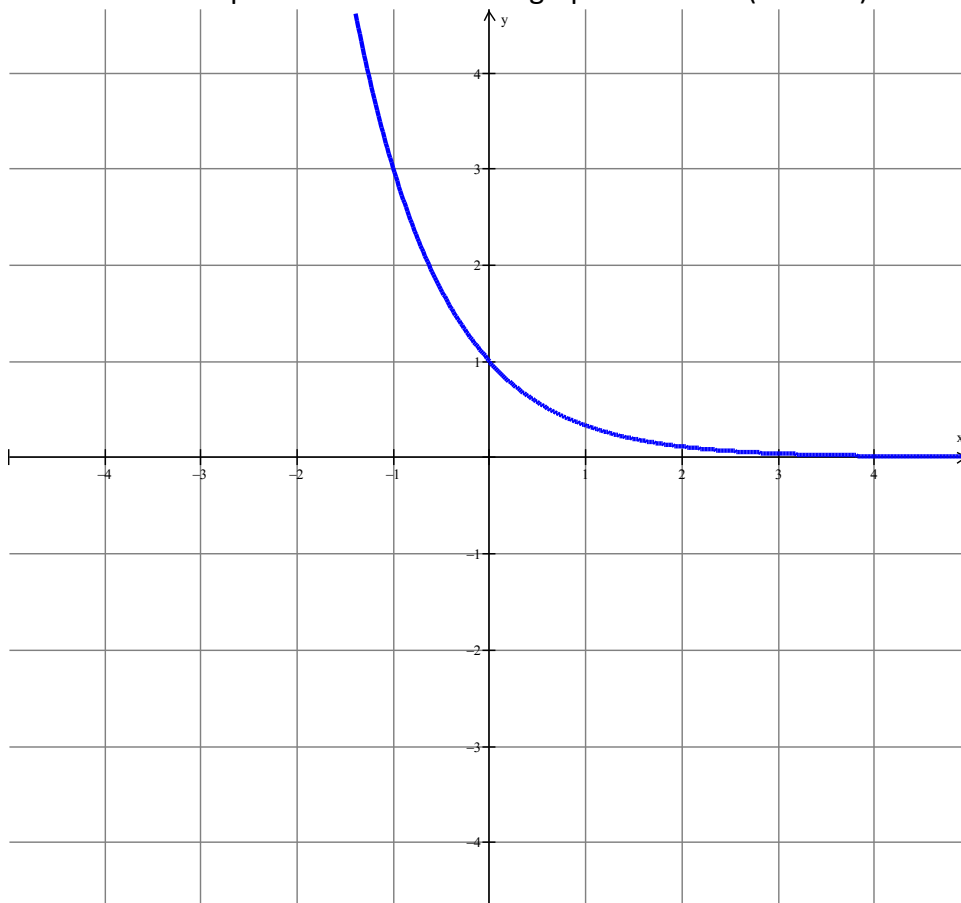
/18

GRAPHING CALCULATORS ARE NOT PERMITTED ON THIS TEST

*Full marks will NOT be given for the final answer only.

When using a calculator, you should provide a decimal answer that is correct **to at least two decimal places** (unless otherwise indicated). Such rounding should occur **only** in the final step of the solution.

1. Determine the equation of the function graphed below. (2 marks)



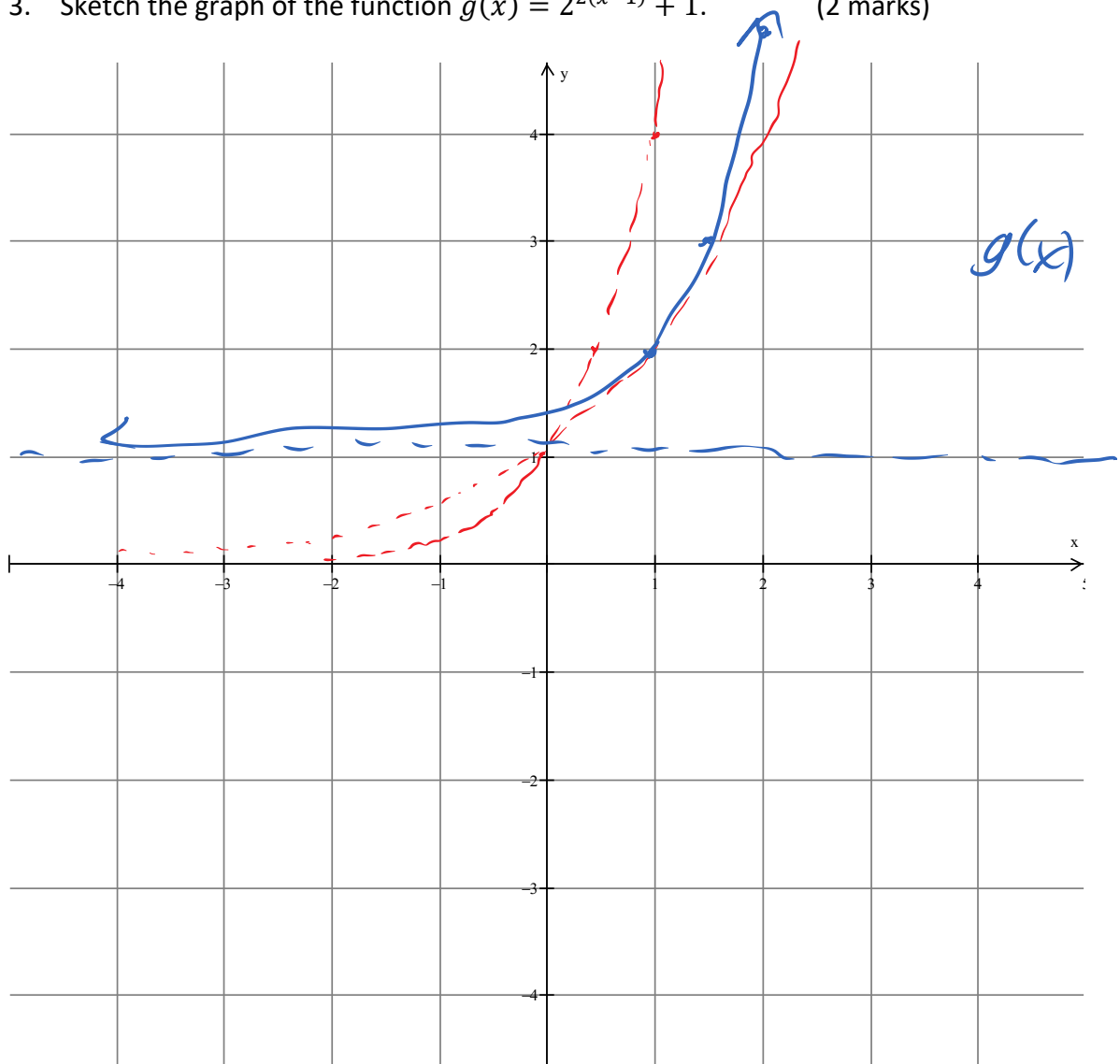
$$y = \frac{1}{3}^x$$

/2

2. What transformations were applied to the function $f(x) = 2^x$ to generate the function $g(x) = 2^{2(x-1)} + 1$? (3 marks)

HC BAFG $\frac{1}{2}$
 RUMH 1
 NP 1

3. Sketch the graph of the function $g(x) = 2^{2(x-1)} + 1$. (2 marks)



4. What is the domain and range of the function $y = a^{(bx)} - c$ where a, b, c are positive real numbers. (2 marks)

$$x \in \mathbb{R}$$

$$y > -c$$

5. Solve each exponential equation (3 marks each).

a) $25^{x+1} = 5^{-2x}$

$$5^{2(x+1)} = 5^{-2x}$$

$$2x+2 = -2x$$

$$4x = -2 \quad x = -\frac{1}{2}$$

b) $9^{2x} = 27^{x+2}$

$$3^{2(2x)} = 3^{3(x+2)}$$

$$4x = 3x+6$$

$$x = 6$$