

Name: _____

Student #: _____

Date: _____

T.A. #: _____

Mathematics 12 Pre-Calculus
LEARNING GUIDE 17 TEST – FUNCTION OPERATIONS

/18

***Full marks will NOT be given for the final answer only.**

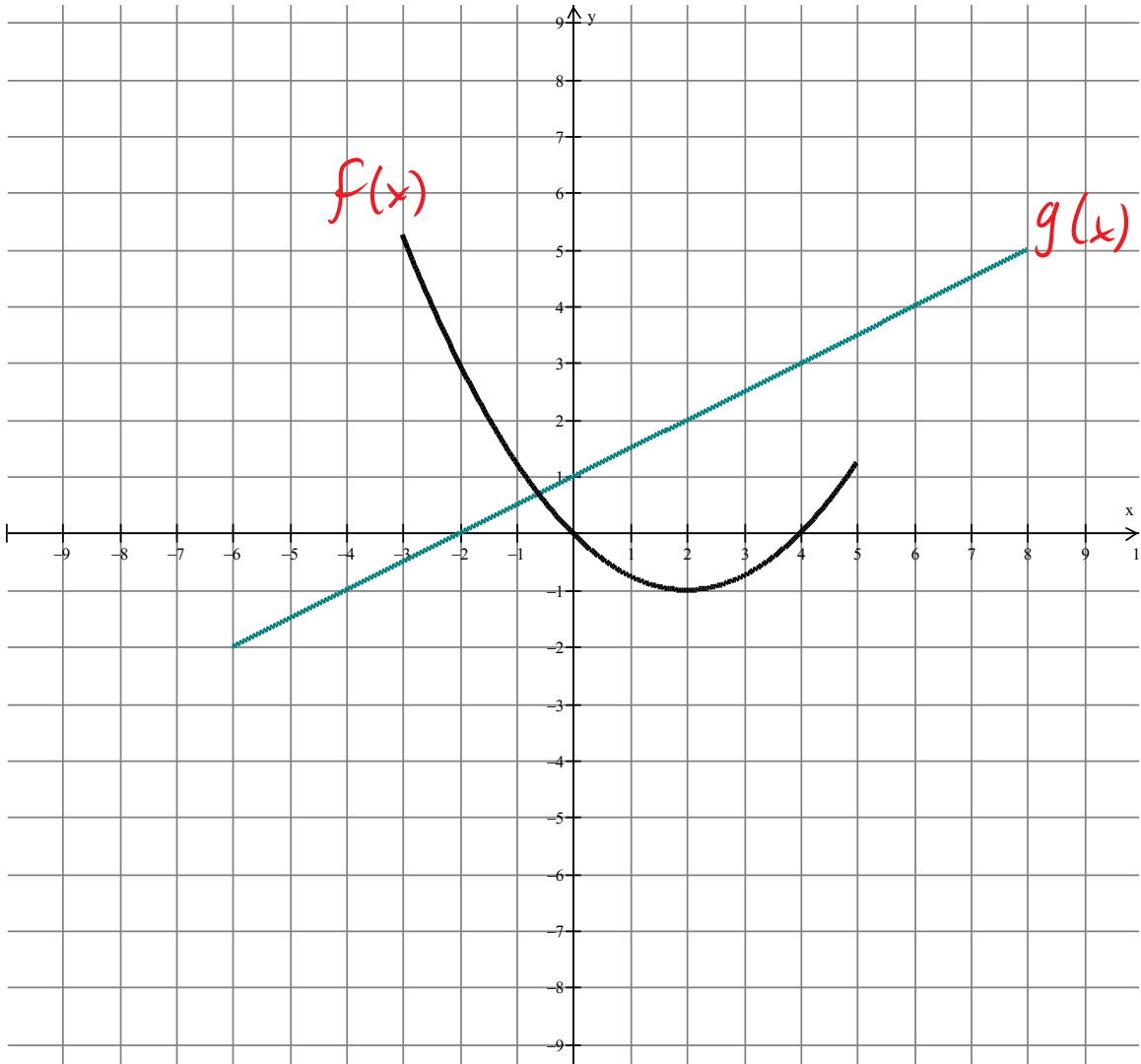
When using a calculator, you should provide a decimal answer that is correct **to at least two decimal places** (unless otherwise indicated). Such rounding should occur **only** in the final step of the solution.

1. If $f(x) = 1 - 3x$ and $g(x) = x^2 + 1$, determine $h(x) = f(x) + g(x)$ and find $h(1)$. (2 marks)

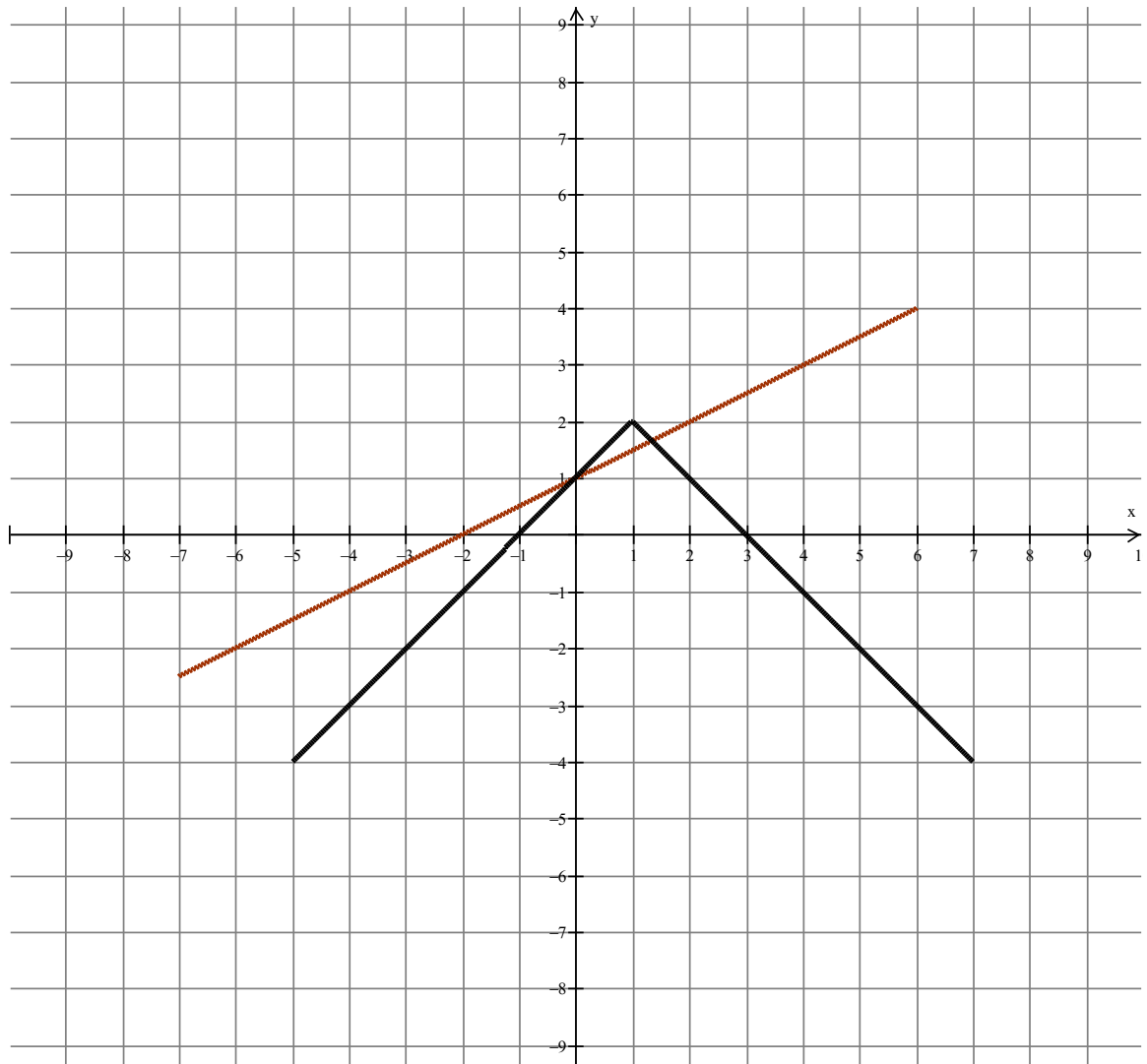
2. If $f(x) = 2x - 3$ and $g(x) = -5x$ determine the function $h(x) = \left(\frac{f}{g}\right)(x)$ and determine the range of $h(x)$. (2 marks)

/4

3. Given the graphs of $y = f(x)$ and $y = g(x)$, sketch the graph of $y = f(x) - g(x)$.
(2 marks)



4. Given the functions $y = f(x)$ and $y = g(x)$, determine $(f \cdot g)(2)$ and determine the domain and range of the function $(f \cdot g)(x)$. (3 marks)



5. If $f(x) = 1 - x^2$ and $g(x) = 3x$, determine: (1 mark each)

a) $f(g(x))$

b) $g(f(1))$

c) $g(g(x))$

6. The revenue function for a company selling n key chains is given by $R(n) = 2n$, and the total cost function is given by $C(n) = 100 + 0.80n$. Determine the simplified equation for $P(n)$, the profit function for the company. (2 marks)

7. Brenda is shopping for new shoes. All items are 25% off. She also has a \$15 off coupon.

a) Let x represent the regular price of the shoes. Express the price, d , of the shoes after the 25% discount.

(1 mark)

b) Let x represent the regular price of the shoes. Express the price, c , of the shoes after the \$15 off coupon. (1 mark)

c) Determine $c(d(x))$ and $d(c(x))$ and explain what each value means. (1 mark)

d) If the regular price of the shoes cost \$90, which method results in the better deal? (1 mark)